

Engineering in transformation
Execute turn key projects profitable

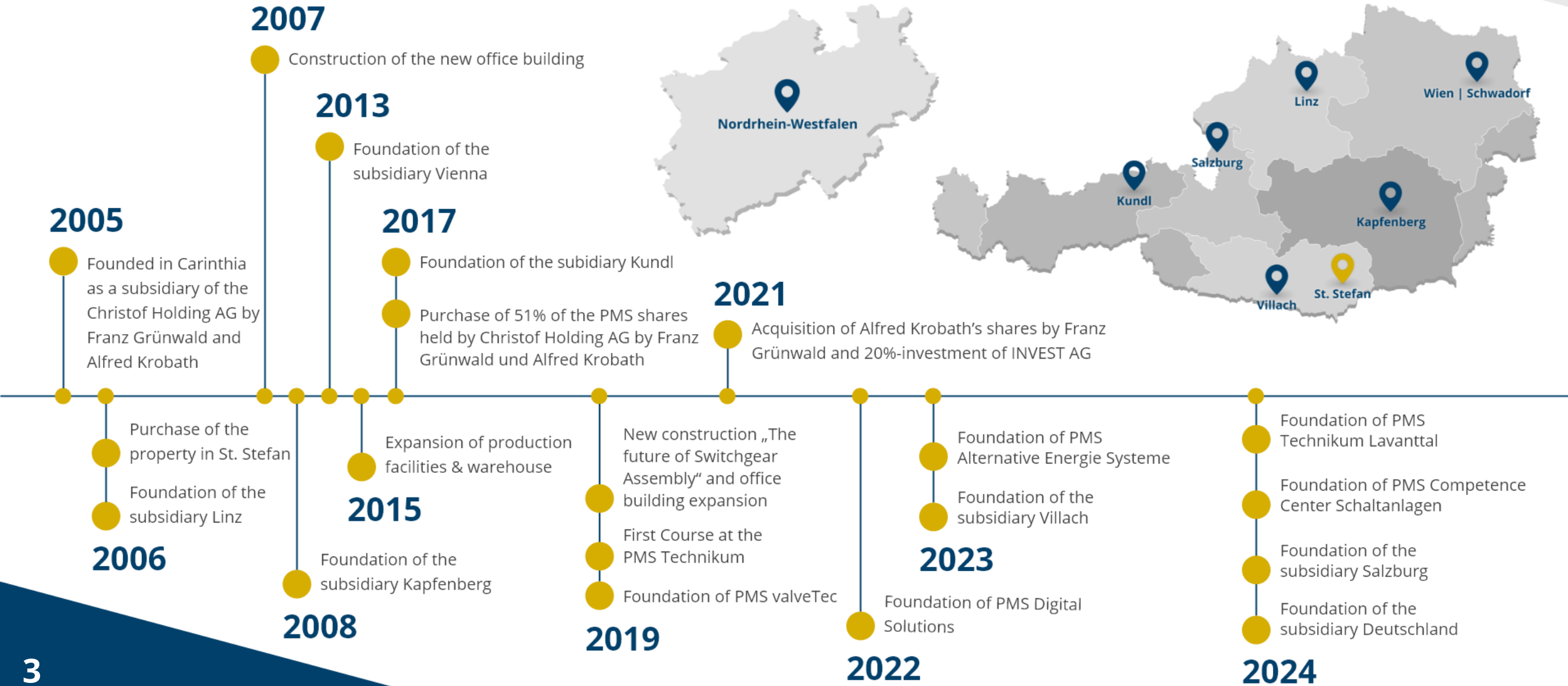
PMS Group GmbH

Organisation



Success through market presence

PMS – regional base. In demand worldwide.



Our core competences

We think in solutions



“

Our customers benefit from our flexibility, extensive experience, comprehensive cross-sector knowledge and efficient project management.

”



Engineering/automation/project management

We believe that every project needs to be planned carefully according to the actual needs of each single customer while providing best support across the entire duration of the project: technical expertise, experienced project management while remaining flexible in every way.



Power Engineering

Project planning, network analysis or medium-voltage protection testing: we are your partner regarding individual customer requirements. We help you to enhance competitiveness and to increase and implement energy and overall efficiency.



Industrial assembly

We offer short, medium and long-term support, consultation and above all reliable implementation for all aspects of industrial assembly. No matter where our customers are based, we're here to assist you worldwide.



Our core competences

We think in solutions



Service and maintenance

Focused on maintenance, improvement strategies or coordinating new projects – our portfolio covers a wide range of services. Getting to the heart of our customers' plants and production sequences is a major part of our service.



Installation

The expert personnel ensures a coordinated and secure transition of an installation or machine into safe, error-free operation, thereby generating lasting value.



Mechanical and systems engineering

We're a versatile mechanical and systems engineering partner who can give our customers interdisciplinary value and the confidence to plan ahead. When various requirements come together, this team stands out with all-round expertise in mechanical and systems engineering, safety technology and R&D services.



EI&C for gas application and process technology

Thanks to our experience throughout the years we are specialized in meeting the needs of the petrochemical industry. We provide customized solutions with maximum safety and up-to-date expertise in standards and regulations in gas plants.



Our partnerships

Strong partners are the key to success!



We tackle customer-specific electrical engineering and automation challenges every day. To maintain and hone our strength and core competence in the long run, we team up with strong partners.



Our References

A selection of satisfied customers



Engineering

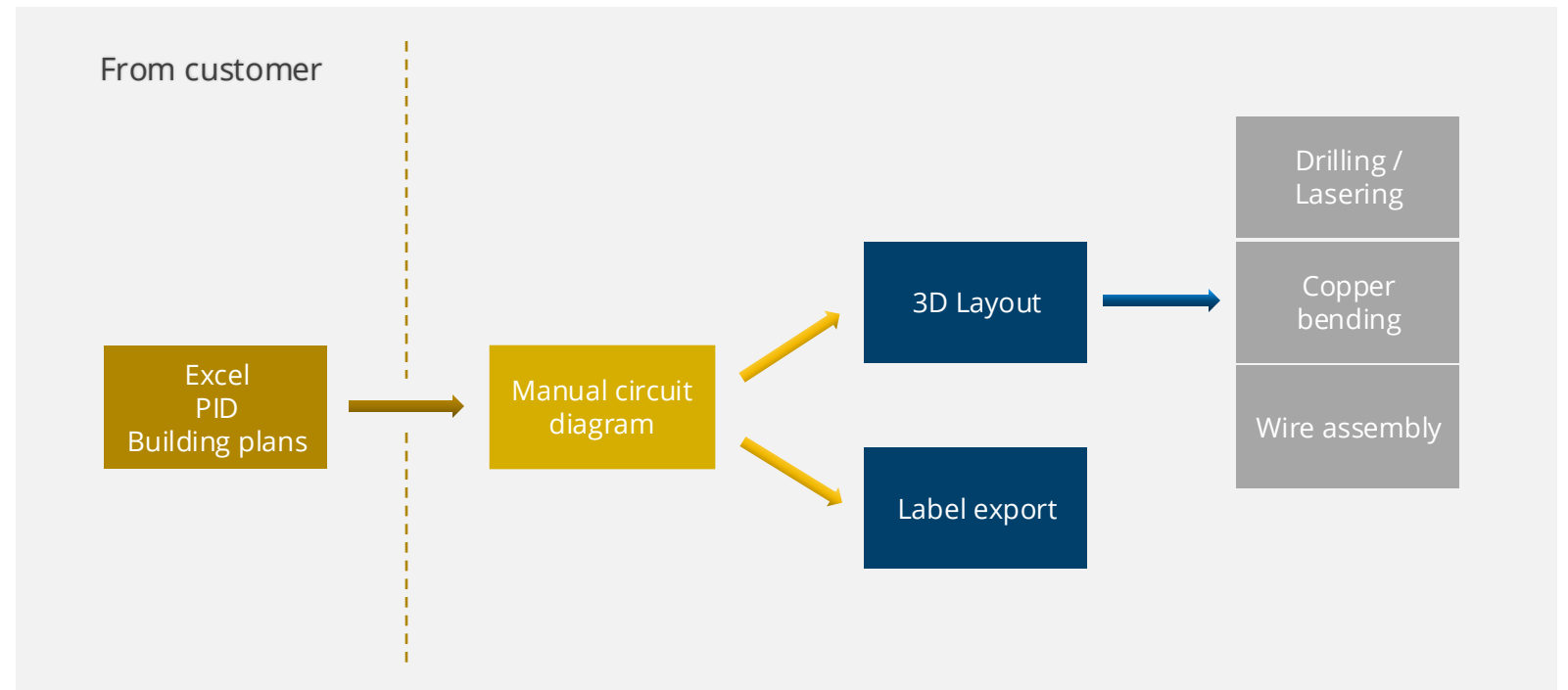
Key facts

Engineer employees	~30
Number of licenses and addons	12x EPLAN Electric P8 Prof. 10x EPLAN Pro Panel Prof. 2x EPLAN eBuild 1x EPLAN Smart Wiring 4x Process wiring 1x Process copper

Reasons for automating electrical engineering

Initial situation

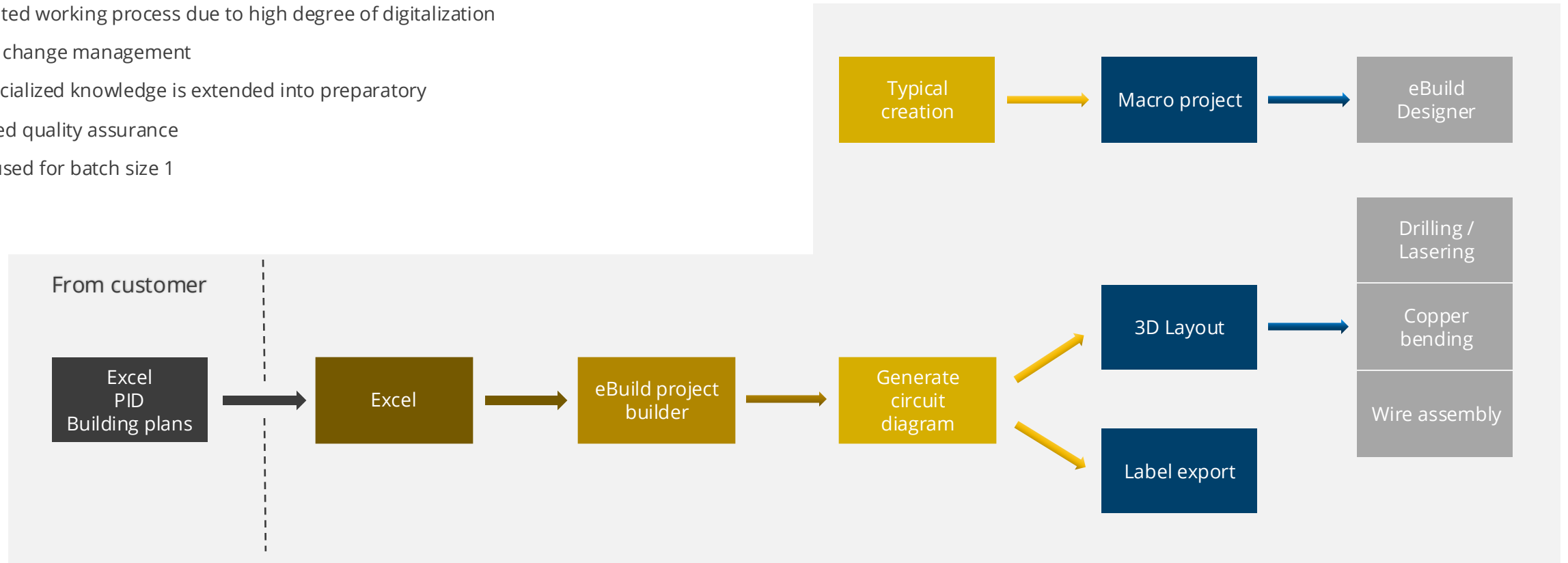
- Manual creation of circuit diagrams
- More time required for subsequent changes
- Time-consuming workflow
- Each circuit diagram has to be created individually
- Special expertise is required



Reasons for automating electrical engineering

Optimized workflow

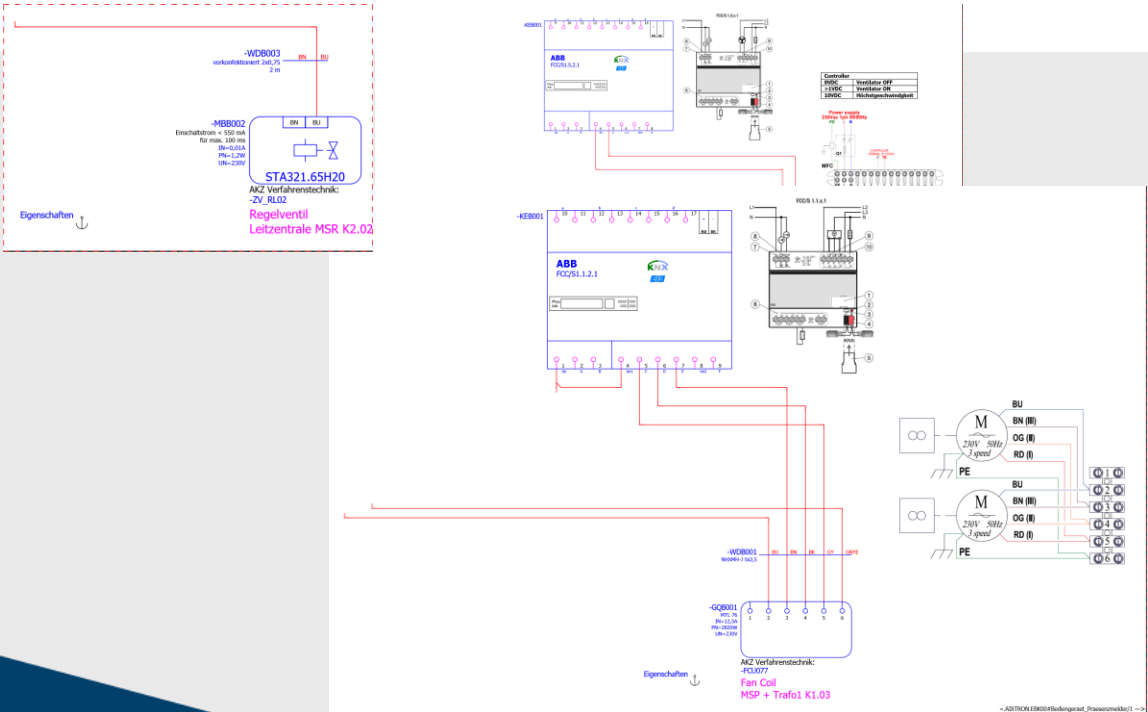
- Automated working process due to high degree of digitalization
- Flexible change management
- The specialized knowledge is extended into preparatory
- Increased quality assurance
- Is also used for batch size 1



What's behind digitalization in the creation of circuit diagrams



Macro projects



eBuild Designer

Fan_Coil_FLC

Konfigurationsvariablen

Makros

Alle auswählen | Neuauflagen | Duplizieren | Vorschau | Löschen

Status (Abhängig)

Inner erzeugt
Benutzerdefiniert
Abhängig

Position (Aus Makro anwenden)

Struktur

Variablen (0)

Variablenname

Eigenschaften: int_Zähler_Fan_Coil

Wert

=(int_MainIndex*1)+1

Grp_Fan_Coil_FLC

Konfigurationsvariablen

Elemente

Alle auswählen | Duplizieren | Löschen

Status (inner erzeugt)

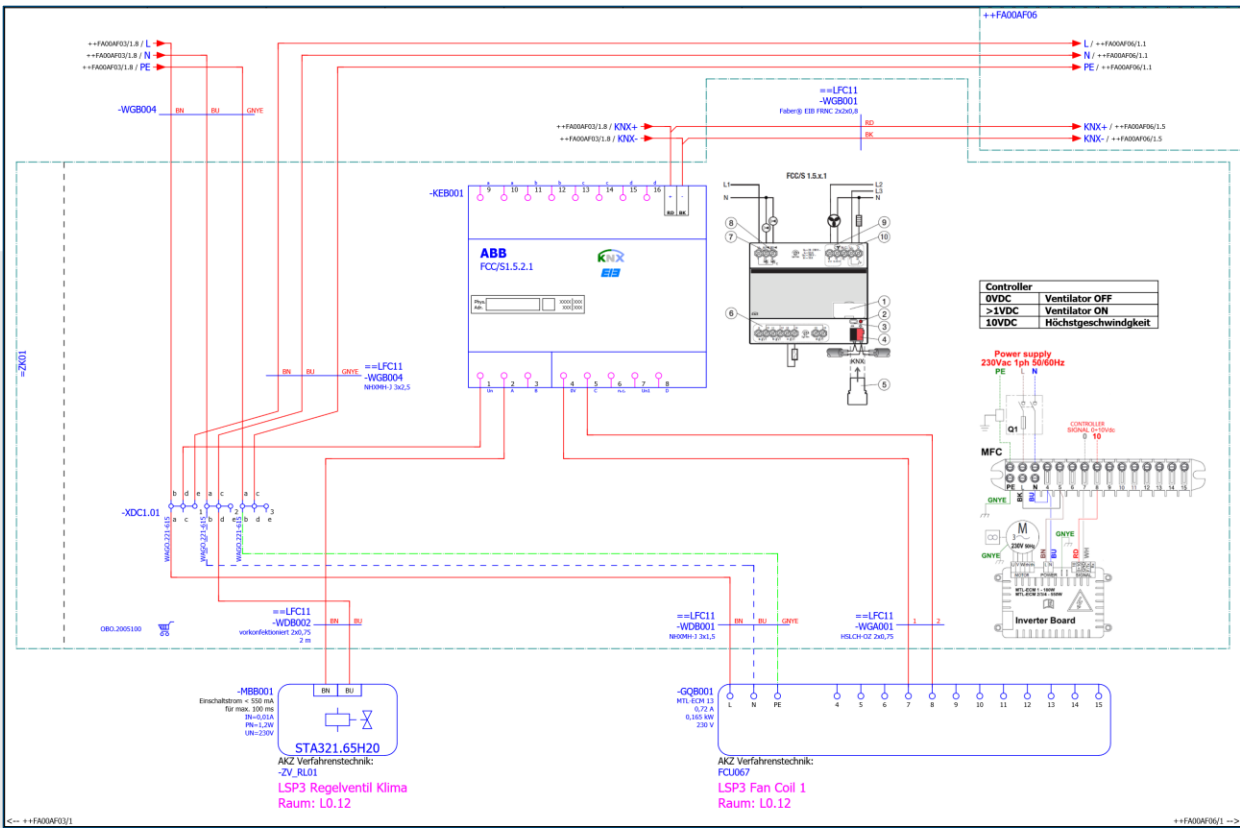
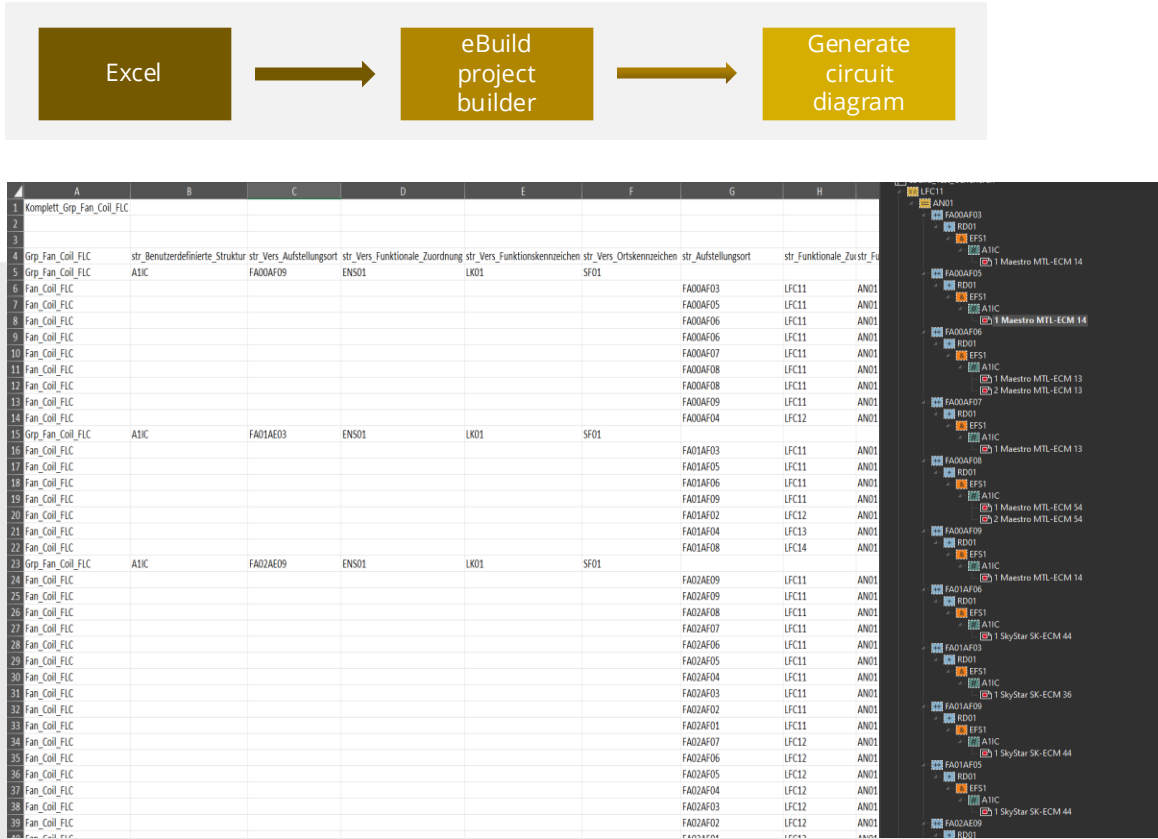
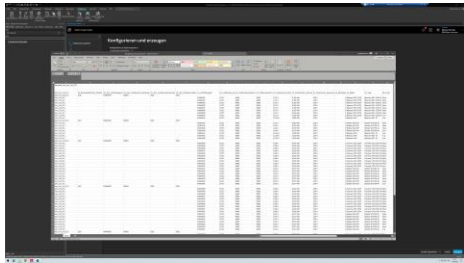
Instanzen (abhängige Ansicht)

Variablen (21)

Variablenname	Wert
str_Benutzerdefinierte_Struktur	str_Benutzerdefinierte_Struktur
str_Funktionale_Zuordnung	
str_Aufteilungsport	
str_Funktionsdennzeichen	
str_Ordnungszahlen	
str_Verz_Funktionale_Zuordnung	str_Verz_Funktionale_Zuordnung
str_Verz_Aufteilungsport	str_Verz_Aufteilungsport
str_Verz_Funktionsdennzeichen	str_Verz_Funktionsdennzeichen
str_Verz_Ordnungszahlen	str_Verz_Ordnungszahlen
str_Verbraucher_Steuerung	
str_Verbraucher_Leistung	
str_Verbraucher_Spannung	
int_MainIndex	
str_Makro	
str_Karten_Verweis_1	
str_End	
str_Strukturknoten_Aufteilungsport	
str_Karten_Verweis_2	

What's behind digitalization in the creation of circuit diagrams

Diversity with eBuild project creator



Findings from automating electrical engineering

Benefits

Up to 50% time saving	More practical and faster
Cost & resource reduction	Short effort for similar projects
Quality improvement	High reuseability (PLC, Feeders, Control voltage)
Quick change management	No special EPLAN knowledge needed

Challenges

Complex excel lists at the beginning	Qualified employees or key users required
Structured base in the eBuild Designer	Designer & project builder is one license

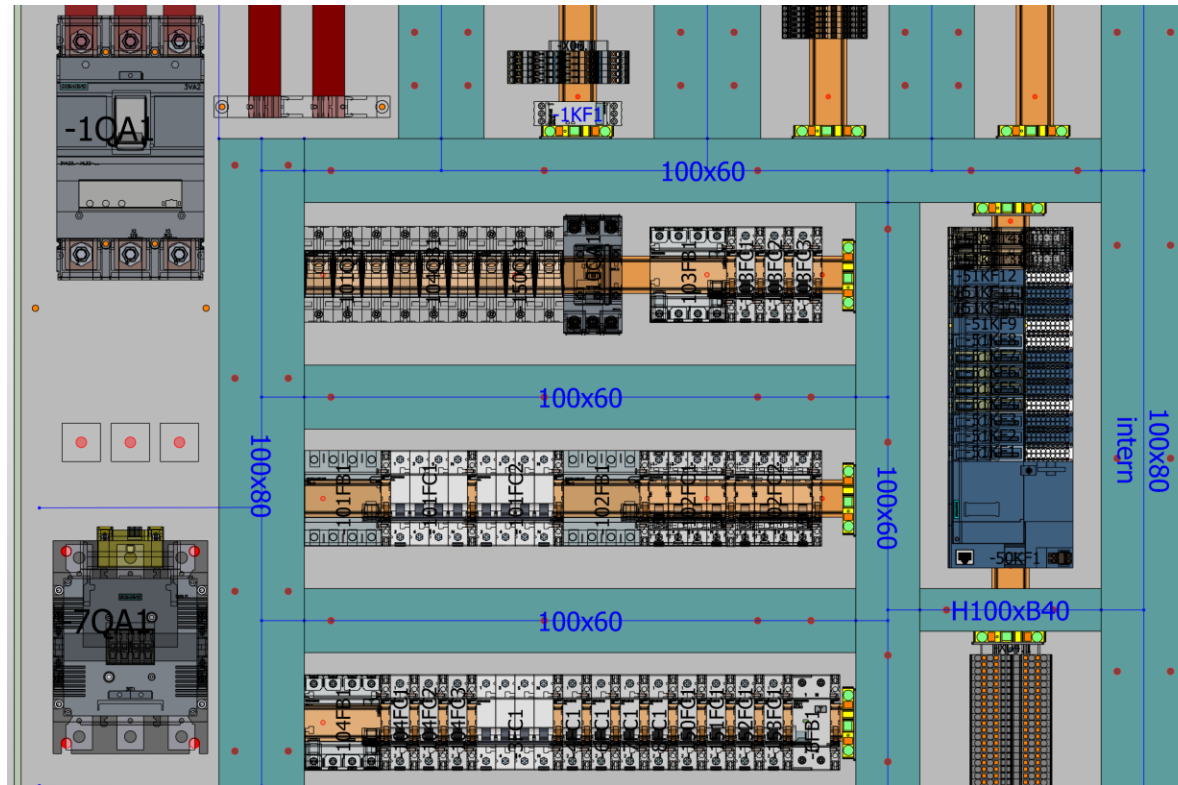
Value chain

Machinery key facts

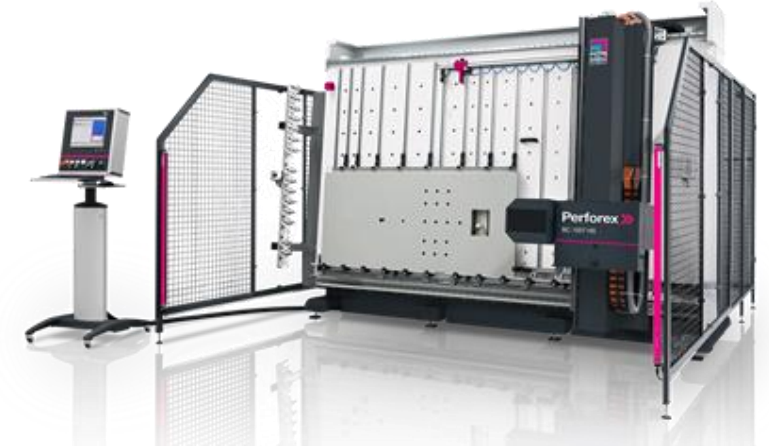
Type of machinery	Quantity
Rittal Perforex BC	1
Rittal Perforex LC	1
Rittal Wire terminal	1
Rittal Secarex	1
EHRT Kupferbearbeitung	1

Value chain

Drilling / Lasering



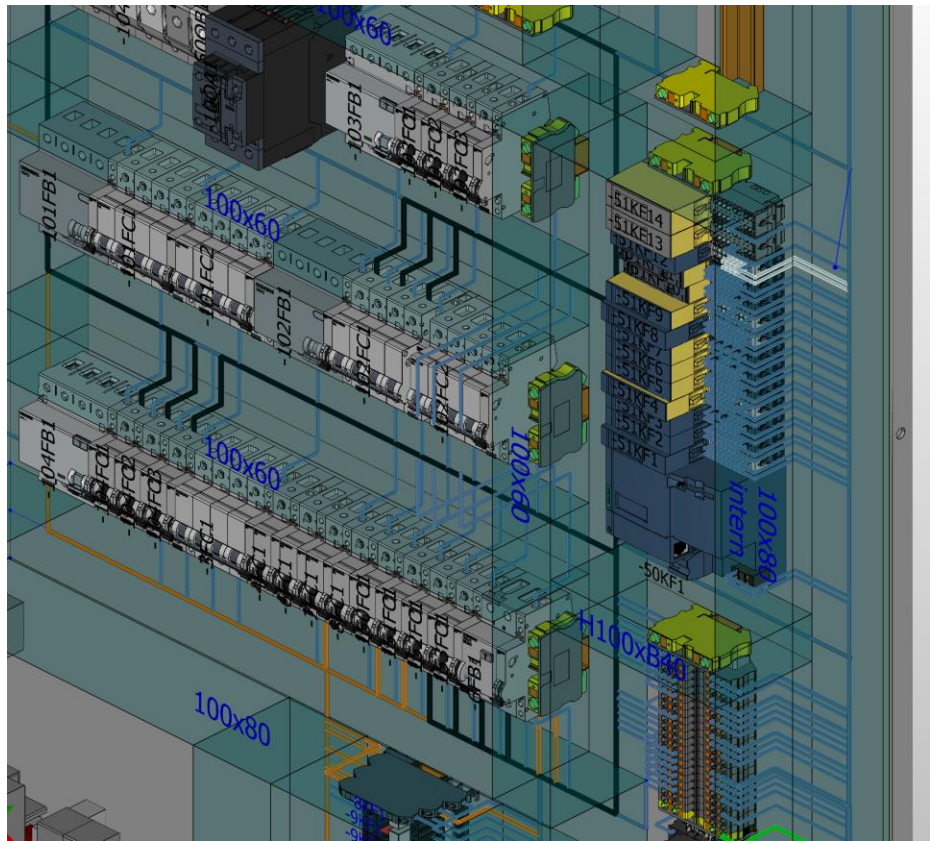
EXPORT



Symbol image

Value chain

Wire assembly

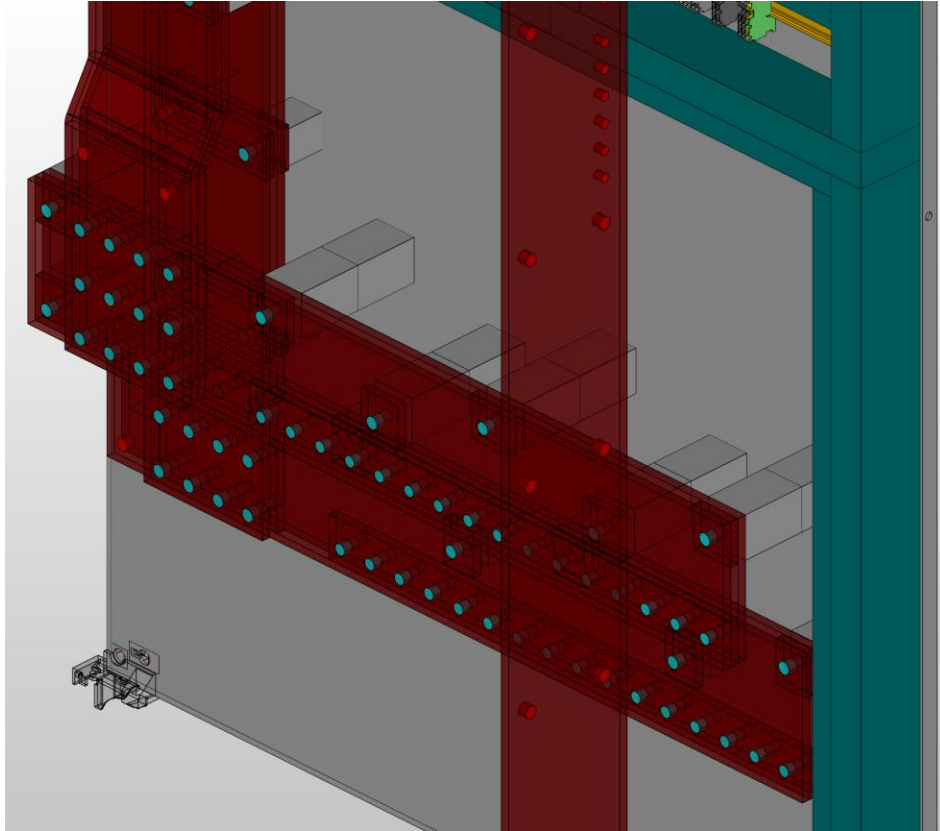


EXPORT



Value chain

Copper binding



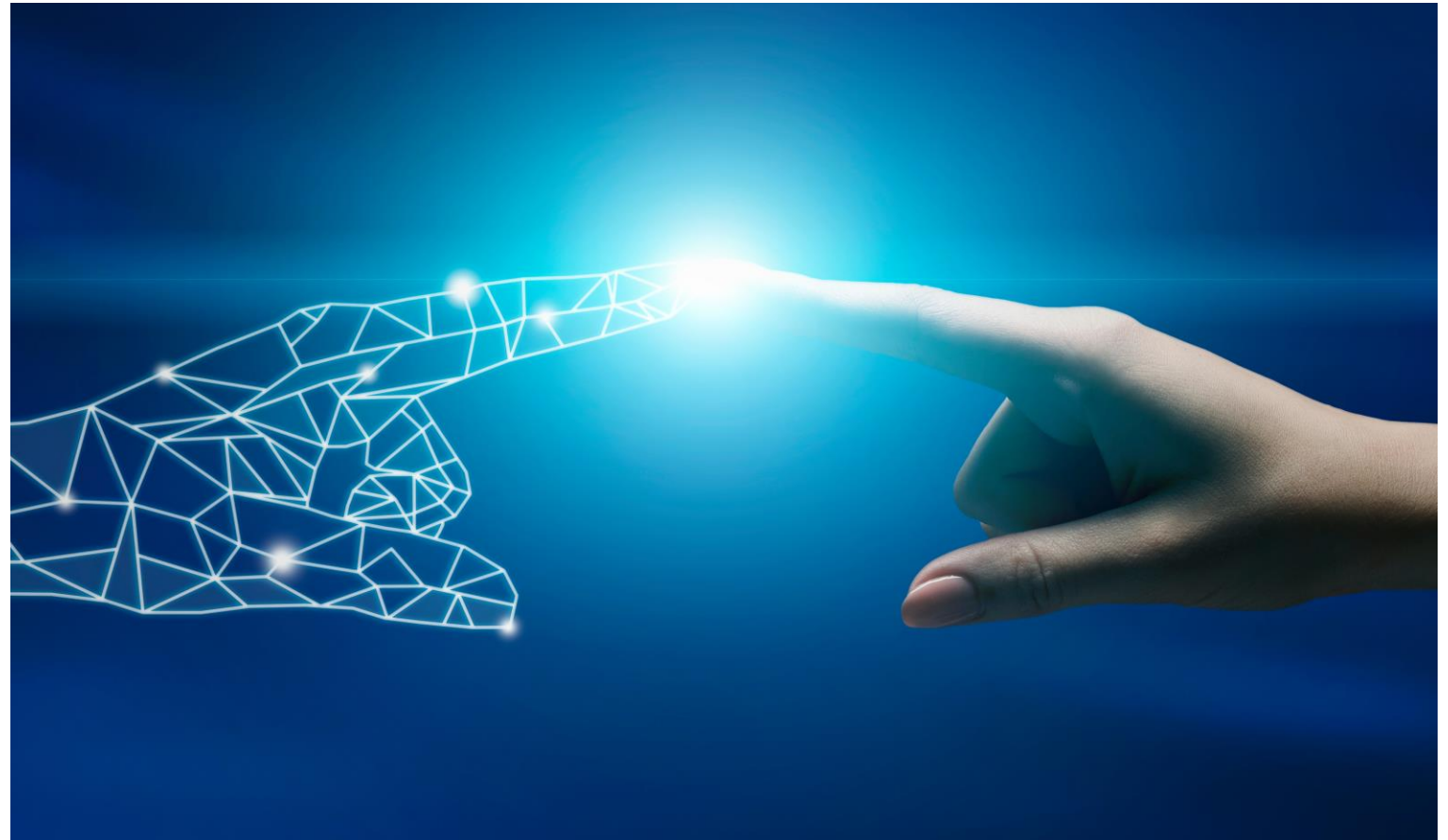
EXPORT



Sustainable development and the implementation of innovative findings

Fit for the future

- Realize more projects with eBuild
- More digitalization in the secondary areas
 - EPLAN eView
 - EPLAN Smart Wiring
 - EPLAN ePocket
- Connection to ERP system
- Increase the useability at projects with batch size 1
- Cooperation with AI



Thank you
for your attention

PMS Group



Franz Grünwald Markus Leopold



Franz Grünwald



Kurt Schmerlaib



Andreas Terler



Wolfgang Sattler





Roman Dengg



Martin Grünwald

Contact

 PMS-Straße 1
A-9431 St. Stefan/Lavanttal

 +43 (0)50 767 - 0

 office@pms.at

 www.pms.at

